



Nestled in the sought-after area of Rudman Park, Chippenham, this modern end terrace house presents an excellent opportunity for those seeking a comfortable and convenient home. With two spacious double bedrooms, this property is ideal for couples, small families, or individuals looking for extra space.

Upon entering, you are welcomed by an entrance hall that leads to a convenient downstairs cloakroom, enhancing the practicality of the home. The lounge is a delightful space, perfect for relaxation or entertaining guests, offering a warm and inviting atmosphere. The well-appointed bathroom serves the two bedrooms, ensuring that all essential amenities are easily accessible.

The property boasts a garden, providing an outdoor space for gardening or those who simply wish to enjoy some fresh air. Additionally, there is a garage and parking available for one vehicle, adding to the convenience of this delightful home.

Viewing

Viewings Strictly by appointment with the sole selling agents Atwell Martin call or e-mail us today to confirm your appointment | 65 New Road, Chippenham, Wiltshire SN15 1ES

Situation - Chippenham

Chippenham has a wide range of amenities to include High Street retailers plus supermarkets and retail parks and, in addition, there is a leisure centre with indoor swimming pool, library, cinema and public parks. Chippenham also benefits from excellent schooling with numerous primary and three highly sought after secondary schools. For those wishing to commute there is also a regular main line rail service from Chippenham station to London (Paddington) and

the West Country and the M4 motorway is easily accessed via Junction 17 a few miles north of the town.

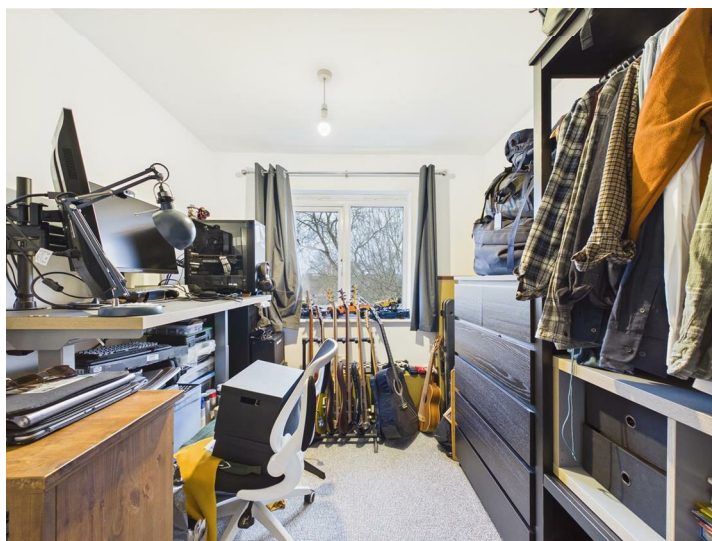
Property Information

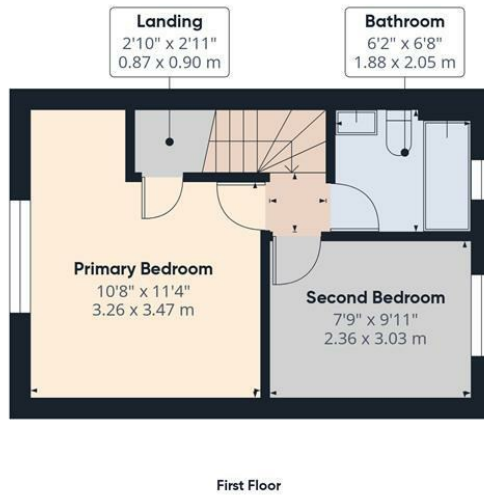
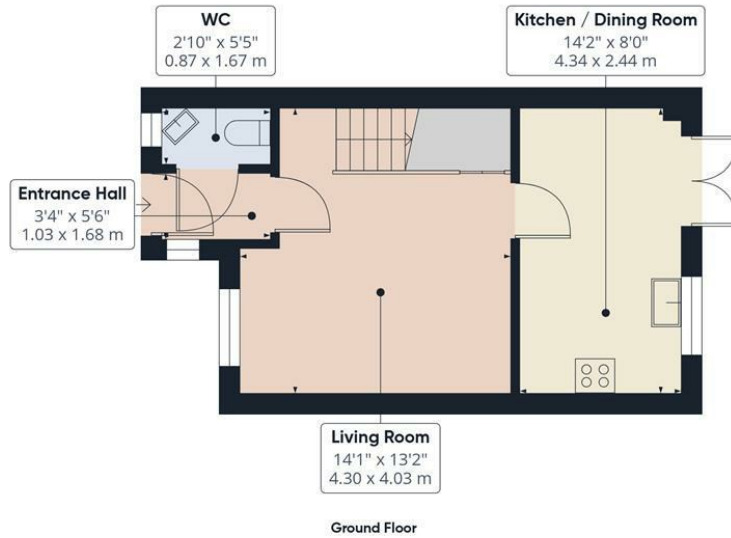
Utilities/Services - Electric, Water & Drainage, Gas Central Heating

Wiltshire Council Tax - Band B

Tenure - Management Charge TBC







Approximate total area⁽¹⁾
596 ft²
55.4 m²

(1) Excluding balconies and terraces

Calculations reference the RICS IPMS 3C standard. Measurements are approximate and not to scale. This floor plan is intended for illustration only.

GIRAFFE 360



Energy Efficiency Rating		
	Current	Potential
Very energy efficient - lower running costs		
(92 plus) A		
(81-91) B		91
(69-80) C		77
(55-68) D		
(39-54) E		
(21-38) F		
(1-20) G		
Not energy efficient - higher running costs		
England & Wales EU Directive 2002/91/EC		
Environmental Impact (CO ₂) Rating		
	Current	Potential
Very environmentally friendly - lower CO ₂ emissions		
(92 plus) A		
(81-91) B		
(69-80) C		
(55-68) D		
(39-54) E		
(21-38) F		
(1-20) G		
Not environmentally friendly - higher CO ₂ emissions		
England & Wales EU Directive 2002/91/EC		

The particulars are set out as a general outline only for the guidance of intended purchasers or lessees, and do not constitute, any part of a contract. Nothing in these particulars shall be deemed to be a statement that the property is in good structural condition or otherwise nor that any of the services, appliances, equipment or facilities are in good working order. Purchasers should satisfy themselves of this prior to purchasing